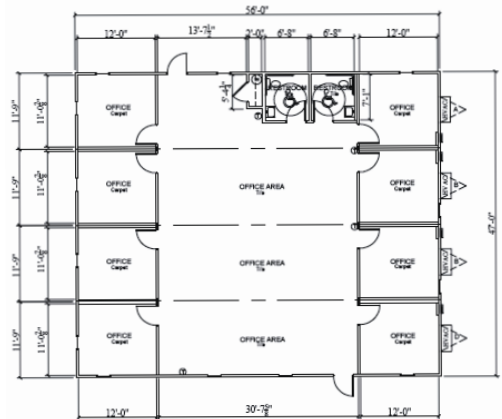
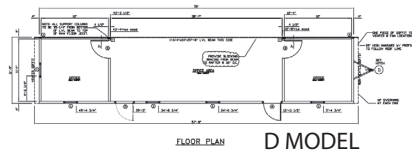


Modular S-Plex Building is shown with optional features.



Sample floor plan configuration.

Choose from these floor plans to create your own unique configuration.

S-PLEX BUILDINGS FROM SATELLITE SHELTERS

NOW MEET THE REQUIREMENTS SET BY THE 2006 EDITION OF THE INTERNATIONAL ENERGY CONSERVATION CODE

Modular S-Plex Buildings are a highly versatile and cost-effective solution that can be configured to meet your temporary or permanent space needs. They have several building applications including commercial and construction offices, sales offices, classrooms, and any other space where an aesthetically pleasing environment is required. The S-Plex is great for high-profile jobs and growing organizations!

Modular S-Plex Buildings are easily assembled and expandable to meet changing needs. Use one or combine several models to create and customize your own unique configuration. From a simple double-wide building to a larger structure with multiple private offices, with a variety of floor plans to choose from, your space is only limited by your imagination!

Our buildings now meet the requirements set by the 2006 edition of the International Energy Conservation Code! Our energy updates bring you a **30% increase in efficiency** as compared to older buildings that were built to comply with the prior energy code.

BUILDING FEATURES

- 2 Handicap accessible restrooms
- A finished wooden exterior
- Electric HVAC system
- Vinyl covered gypsum interior walls
- Acoustical lay-in ceiling tiles – allow for telecommunication wiring throughout all parts of the building
- Carpeted offices and large windows – optional building features

BENEFITS TO THE 2006 ENERGY CODE

- Thermally broken, double insulated glass windows have replaced single glazed windows.
- Dual switching and dimmer switches save money and energy, reducing the number of lights used and improving internal lighting energy usage by 50%.
- External lighting energy usage has improved by using photocells, so lights don't remain on during the weekends or when personnel is not available to turn them off during the week.

Continually working towards a greener environment. It's why Satellite Shelters is *The First in Space*.



www.satelliteco.com
800-453-1299
inquiry@satelliteco.com